

# Spacemax

## Specifications



# Project: S-200 (Bicon)

<b>Model number:</b>	<b>S-200 (Standard Civilian Grade Wide Open Unit)</b>
<b>Model size when folded:</b>	<b>Approx. 1.18m x 6.06m x 2.60m</b>
<b>Note:</b>	<b>Refer to product drawings</b>
<b>Module shipping height:</b>	<b>To peak of envelope* - approx. 2.60m</b>
<b>Module ship weight:</b>	<b>(does not include ship loose) approx. 2,040kg</b>

\* Shipping height does not include height of transporting trailer.

## 1.0 CONTAINER - COMPATIBLE - FRAME

Max. stack capacity per column: 50,000lbs.

Container - compatible international standard.

1.1	Corner fittings:	Steel square tubes
1.2	Main bottom beams:	Steel square tubes
1.3	Secondary bottom beams:	Steel rectangular tubes
1.4	Forklift pockets:	Steel square tubes
1.5	Posts:	Steel square tubes
1.6	Main top beams:	Steel square tubes
1.7	Secondary top beams:	Steel square tubes
1.8	Diagonal bracing:	Steel square tubes
1.9	Top bracing:	Steel angle bar
1.10	Bottom bracing:	Steel angle bar
1.11	Access ladder:	Steel flat bar with 3/4 inch steps
1.12	Telescopic supports w/pads:	Included
1.13	Paint finishing:	Polysiloxane XLE-80 epoxy siloxane
1.14	Paint colour:	Tan

## 2.0 FLOOR SYSTEM

Floor live load: 40 PSF

2.1	Structural insulated panel (SIPS)	
2.1.1	Bottom skin:	Aluminium, 0.030 embossed, tan paint
2.1.2	Core:	Expanded polystyrene (EPS)
2.1.3	Top skin:	Aluminium, 0.040 flat
2.2	Perimeter extrusions:	ATS proprietary thermally-broken aluminium 30 min acid class 1 anodized
2.2.1	Main extrusions:	ATS proprietary thermally-broken w/ built-in hinge aluminium 30 min acid class 1 anodized
2.2.2	Secondary extrusions:	ATS proprietary thermally-broken aluminium 30 min acid class 1 anodized
2.2.3	Air/water seals:	Double resilient neoprene built-in
2.3	Flooring:	T.P.O, heavy duty levant flooring

**3.0 WALL SYSTEM**

Wind load: 115mph ( unit to be anchored as per applicable local building code and asce 7-10)

3.1	Structural insulated panel (SIP)	
3.1.1	Exterior skin:	Aluminium, 0.030 embossed, tan paint
3.1.2	Core:	Expanded Polystyrene (EPS)
3.1.3	Interior skin:	Aluminium, 0.030 embossed, white paint
3.2	Perimeter extrusions:	ATS proprietary thermally-broken aluminium 30 min acid class 1 anodised.
3.2.1	Main extrusions:	ATS proprietary thermally-broken w/ built-in aluminium 30 min acid class 1 anodised.
3.2.2	Secondary extrusions:	ATS proprietary thermally-broken aluminium 30 min acid class 1 anodised.
3.2.3	Air/water seals:	Double resilient neoprene built-in
3.3	Partitions type SIP:	Optional

**4.0 ROOF SYSTEM**

Maximum live load capacity: 25 PSF

4.1	Structural insulated panel (SIP)	
4.1.1	Bottom skin:	Aluminium, 0.030 embossed, white paint
4.1.2	Core:	Expanded Polystyrene (EPS)
4.1.3	Top skin:	Aluminium, 0.040 embossed, tan paint
4.2	Perimeter extrusions:	ATS proprietary thermally-broken aluminium 30 min acid class 1 anodised.
4.2.1	Main extrusions:	ATS proprietary thermally-broken w/ built-in aluminium 30 min acid class 1 anodised.
4.2.2	Secondary extrusions:	ATS proprietary thermally-broken aluminium 30 min acid class 1 anodised.
4.2.3	Air/water seals:	Double resilient neoprene built-in

**5.0 CONNECTING HARDWARE**

5.1	Floor securing:	ATS proprietary built-in aluminium locks.
5.2	Wall securing:	ATS proprietary built-in aluminium locks.
5.3	Roof securing: spring loaded heavy duty latches.	ATS proprietary built-in aluminium locks and

**7.0 DOORS AND WINDOWS**

7.1	Exterior doors:	Nominal 36" w x 78" h, proprietary SIP/ATS proprietary thermally-broken aluminium 30 min acid class anodized extrusion.
7.1.1	Hardware:	Lockset (deadbolt), Ergonomic push-pull handles, Spring loaded door closer, Weatherstripping.
7.2	Interior doors:	Optional
7.3	Windows:	36" w x 48" h nominal
7.4	Glazing:	Vinyl frame w/clear double insulated glass.

### 8.0 ELECTRICAL

- 8.1 Load center: Surface-mounted (as per NEMA standards) 220V, 50HZ, 3-wire, 100 amp (min) rated. external load center box. Connection for ground rod only.
- 8.2 Service entry: Wiring to be type THWN copper. 3 wiring: (#12 min wire size).
- 8.3 Lights: 48" surface-mounted double tube T8. With diffuser.
- 8.4 Receptacles: 220V/15A duplex - with recept face plates. H.V.A.C. recept - for appropriate equipment. *Note: all receipts are to be grounding type.*
- 8.5 Smoke detectors: One per room.

### 9.0 HEATING, COOLING AND VENTILATION

- 9.1 HVAC: (1 - per room) Wall mounted 220 volts 50 HZ, cooling BTUH 9,000 - heating BTUH 9,000.

### 10.0 PLUMBING

- 10.1 Plumbing: Optional



**NOTE:** ACTUAL UNITS MAY NOT LOOK EXACTLY AS SHOWN ABOVE

Specifications may change without notice at the sole discretion of Australian Temporary Structures.

# Project: S-175 (Unicon)

<b>Model number:</b>	<b>S-175 (Custom Civilian Grade Community Bathroom 6 - Showers)</b>
<b>Model size when folded:</b>	<b>Approx. 2.44m x 6.06m x 2.60m</b>
<b>Note:</b>	<b>Refer to product drawings</b>
<b>Module shipping height:</b>	<b>To peak of envelope* - approx. 2.60m</b>
<b>Module ship weight:</b>	<b>(does not include ship loose) approx. 4,513kg</b>

\* Shipping height does not include height of transporting trailer.

## 1.0 CONTAINER - COMPATIBLE - FRAME

Max. stack capacity per column: 50,000lbs.

1.1	Corner fittings:	Container - compatible international standard.
1.2	Main bottom beams:	Steel square tubes
1.3	Secondary bottom beams:	Steel square tubes
1.4	Forklift pockets:	Steel rectangular tubes
1.5	Posts:	Steel square tubes
1.6	Main top beams:	Steel square tubes
1.7	Secondary top beams:	Steel square tubes
1.8	Diagonal bracing:	Steel square tubes
1.9	Top bracing:	Steel square tubes
1.10	Bottom bracing:	Steel rectangular tubes
1.11	Access ladder:	Steel flat bar with 3/4 inch steps
1.12	Telescopic supports w/pads:	Included
1.13	Paint finishing:	Polysiloxane XLE-80 epoxy siloxane
1.14	Paint colour:	Tan

## 2.0 FLOOR SYSTEM

Floor live load: 40 PSF

2.1	Structural insulated panel (SIPS)	
2.1.1	Bottom skin:	Aluminium, 0.030 embossed, tan paint
2.1.2	Core:	Expanded polystyrene (EPS)
2.1.3	Top skin:	Aluminium, 0.040 flat
2.2	Perimeter extrusions:	ATS proprietary thermally-broken aluminium 30 min acid class 1 anodized
2.2.1	Main extrusions:	ATS proprietary thermally-broken w/ built-in hinge aluminium 30 min acid class 1 anodized
2.2.2	Secondary extrusions:	ATS proprietary thermally-broken aluminium 30 min acid class 1 anodized
2.2.3	Air/water seals:	Double resilient neoprene built-in
2.3	Flooring:	T.P.O, heavy duty levant flooring

**3.0 WALL SYSTEM**

3.1 Structural insulated panel (SIP)

3.1.1 Exterior skin:

3.1.2 Core:

3.1.3 Interior skin:

3.2 Perimeter extrusions:

3.2.1 Main extrusions:

3.2.2 Secondary extrusions:

3.2.3 Air/water seals:

3.3 Partitions type SIP:

**Wind load: 115mph ( unit to be anchored as per applicable local building code and asce 7-10)**

Aluminium, 0.030 embossed, tan paint

Expanded Polystyrene (EPS)

Aluminium, 0.030 embossed, white paint

ATS proprietary thermally-broken aluminium  
30 min acid class 1 anodised.ATS proprietary thermally-broken w/ built-in  
aluminium 30 min acid class 1 anodised.ATS proprietary thermally-broken aluminium  
30 min acid class 1 anodised.

Double resilient neoprene built-in

Aluminium partitions SIP type with white emboss  
skins and expanded polystyrene (EPS) and anodized  
aluminium extrusions.**4.0 ROOF SYSTEM**

4.1 Structural insulated panel (SIP)

4.1.1 Bottom skin:

4.1.2 Core:

4.1.3 Top skin:

4.2 Perimeter extrusions:

4.2.1 Main extrusions:

4.2.2 Secondary extrusions:

4.2.3 Air/water seals:

**Maximum live load capacity: 25 PSF**

Aluminium, 0.030 embossed, white paint

Expanded Polystyrene (EPS)

Aluminium, 0.040 embossed, tan paint

ATS proprietary thermally-broken aluminium  
30 min acid class 1 anodised.ATS proprietary thermally-broken w/ built-in  
aluminium 30 min acid class 1 anodised.ATS proprietary thermally-broken aluminium  
30 min acid class 1 anodised.

Double resilient neoprene built-in

**5.0 CONNECTING HARDWARE**

5.1 Floor securing:

5.2 Wall securing:

5.3 Roof securing:

ATS proprietary built-in aluminium locks.

ATS proprietary built-in aluminium locks.

ATS proprietary built-in aluminium locks and  
spring loaded heavy duty latches.**7.0 DOORS AND WINDOWS**

7.1 Exterior doors:

7.1.1 Hardware:

7.2 Interior doors:

7.3 Windows:

7.4 Glazing:

Nominal 36" w x 78" h, proprietary SIP/ATS  
proprietary thermally-broken aluminium 30 min acid  
class anodized extrusion.Lockset (deadbolt), Ergonomic push-pull handles,  
Spring loaded door closer, Weatherstripping.

Vinyl curtains with aluminium frame.

36" w x 48" h nominal

Vinyl frame w/clear double insulated glass.

**8.0 ELECTRICAL**

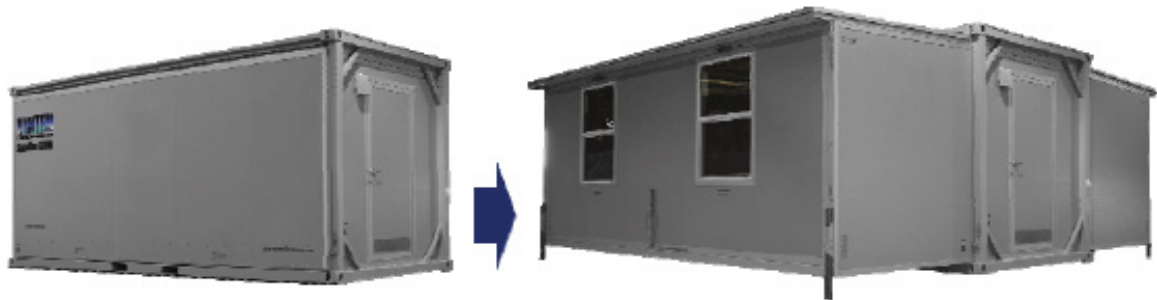
- 8.1 Load center: Surface-mounted (as per NEMA standards) 220V, 50HZ, 3-wire, 100 amp (min) rated. External load center box. Connection for ground rod only.
- 8.2 Service entry: Wiring to be type THWN copper. 3 wiring: (#12 min wire size).
- 8.3 Lights: 48" surface-mounted double tube T8. With diffuser.
- 8.4 Receptacles: 220V/15A duplex - with recept face plates. H.V.A.C. recept - for appropriate equipment. *Note: all receipts are to be grounding type.*
- 8.5 Smoke detectors: One per room.

**9.0 HEATING, COOLING AND VENTILATION**

- 9.1 HVAC: (1 - per room) Wall mounted 220 volts 50 HZ, cooling BTUH 9,000 - heating BTUH 9,000.

**10.0 PLUMBING**

- 10.1 Community bathroom: Community shower unit with vinyl shower curtains w/aluminium frame. All water pipe and fittings to be PEX type; all drain pipes to be PVC SCH40 type min. Plumbing system to be as per IBC standards.
- 10.2 Water heater: On-demand tankless propane water heater.



**NOTE:** ACTUAL UNITS MAY NOT LOOK EXACTLY AS SHOWN ABOVE

Specifications may change without notice at the sole discretion of Australian Temporary Structures.

# Project: S-176 (Unicon)

<b>Model number:</b>	<b>S-176 (Custom Civilian Grade Community Bathroom 7 - Latrines)</b>
<b>Model size when folded:</b>	<b>Approx. 2.44m x 6.06m x 2.60m</b>
<b>Note:</b>	<b>Refer to product drawings</b>
<b>Module shipping height:</b>	<b>To peak of envelope* - approx. 2.60m</b>
<b>Module ship weight:</b>	<b>(does not include ship loose) approx. 4,513kg</b>

\* Shipping height does not include height of transporting trailer.

## 1.0 CONTAINER - COMPATIBLE - FRAME

Max. stack capacity per column: 50,000lbs.

1.1	Corner fittings:	Container - compatible international standard.
1.2	Main bottom beams:	Steel square tubes
1.3	Secondary bottom beams:	Steel square tubes
1.4	Forklift pockets:	Steel rectangular tubes
1.5	Posts:	Steel square tubes
1.6	Main top beams:	Steel square tubes
1.7	Secondary top beams:	Steel square tubes
1.8	Diagonal bracing:	Steel square tubes
1.9	Top bracing:	Steel square tubes
1.10	Bottom bracing:	Steel rectangular tubes
1.11	Access ladder:	Steel flat bar with 3/4 inch steps
1.12	Telescopic supports w/pads:	Included
1.13	Paint finishing:	Polysiloxane XLE-80 epoxy siloxane
1.14	Paint colour:	Tan

## 2.0 FLOOR SYSTEM

Floor live load: 40 PSF

2.1	Structural insulated panel (SIPS)	
2.1.1	Bottom skin:	Aluminium, 0.030 embossed, tan paint
2.1.2	Core:	Expanded polystyrene (EPS)
2.1.3	Top skin:	Aluminium, 0.040 flat
2.2	Perimeter extrusions:	ATS proprietary thermally-broken aluminium 30 min acid class 1 anodized
2.2.1	Main extrusions:	ATS proprietary thermally-broken w/ built-in hinge aluminium 30 min acid class 1 anodized
2.2.2	Secondary extrusions:	ATS proprietary thermally-broken aluminium 30 min acid class 1 anodized
2.2.3	Air/water seals:	Double resilient neoprene built-in
2.3	Flooring:	T.P.O, heavy duty levant flooring



**3.0 WALL SYSTEM**

**Wind load: 115mph ( unit to be anchored as per applicable local building code and asce 7-10)**

- 3.1 Structural insulated panel (SIP)
  - 3.1.1 Exterior skin: Aluminium, 0.030 embossed, tan paint
  - 3.1.2 Core: Expanded Polystyrene (EPS)
  - 3.1.3 Interior skin: Aluminium, 0.030 embossed, white paint
- 3.2 Perimeter extrusions:
  - 3.2.1 Main extrusions: ATS proprietary thermally-broken aluminium 30 min acid class 1 anodised.
  - 3.2.2 Secondary extrusions: ATS proprietary thermally-broken aluminium 30 min acid class 1 anodised.
  - 3.2.3 Air/water seals: Double resilient neoprene built-in
- 3.3 Partitions type SIP: Aluminium partitions SIP type with white emboss skins and expanded polystyrene (EPS) and anodized aluminium extrusions.

**4.0 ROOF SYSTEM**

**Maximum live load capacity: 25 PSF**

- 4.1 Structural insulated panel (SIP)
  - 4.1.1 Bottom skin: Aluminium, 0.030 embossed, white paint
  - 4.1.2 Core: Expanded Polystyrene (EPS)
  - 4.1.3 Top skin: Aluminium, 0.040 embossed, tan paint
- 4.2 Perimeter extrusions:
  - 4.2.1 Main extrusions: ATS proprietary thermally-broken w/ built-in aluminium 30 min acid class 1 anodised.
  - 4.2.2 Secondary extrusions: ATS proprietary thermally-broken aluminium 30 min acid class 1 anodised.
  - 4.2.3 Air/water seals: Double resilient neoprene built-in

**5.0 CONNECTING HARDWARE**

- 5.1 Floor securing: ATS proprietary built-in aluminium locks.
- 5.2 Wall securing: ATS proprietary built-in aluminium locks.
- 5.3 Roof securing: ATS proprietary built-in aluminium locks and spring loaded heavy duty latches.

**7.0 DOORS AND WINDOWS**

- 7.1 Exterior doors:
  - 7.1.1 Hardware: Lockset (deadbolt), Ergonomic push-pull handles, Spring loaded door closer, Weatherstripping.
- 7.2 Interior doors: Vinyl curtains with aluminium frame.
- 7.3 Windows: 36" w x 48" h nominal
- 7.4 Glazing: Vinyl frame w/clear double insulated glass.

**8.0 ELECTRICAL**

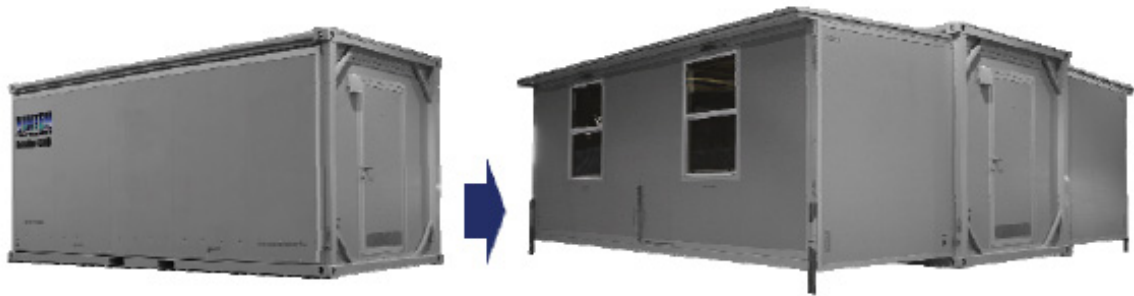
- 8.1 Load center: Surface-mounted (as per NEMA standards) 220V, 50HZ, 3-wire, 100 amp (min) rated. External load center box. Connection for ground rod only.
- 8.2 Service entry: Wiring to be type THWN copper. 3 wiring: (#12 min wire size).
- 8.3 Lights: 48" surface-mounted double tube T8. With diffuser.
- 8.4 Receptacles: 220V/15A duplex - with recept face plates. H.V.A.C. recept - for appropriate equipment. *Note: all receipts are to be grounding type.*
- 8.5 Smoke detectors: One per room.

**9.0 HEATING, COOLING AND VENTILATION**

- 9.1 HVAC: (1 - per room) Wall mounted 220 volts 50 HZ, cooling BTUH 9,000 - heating BTUH 9,000.

**10.0 PLUMBING**

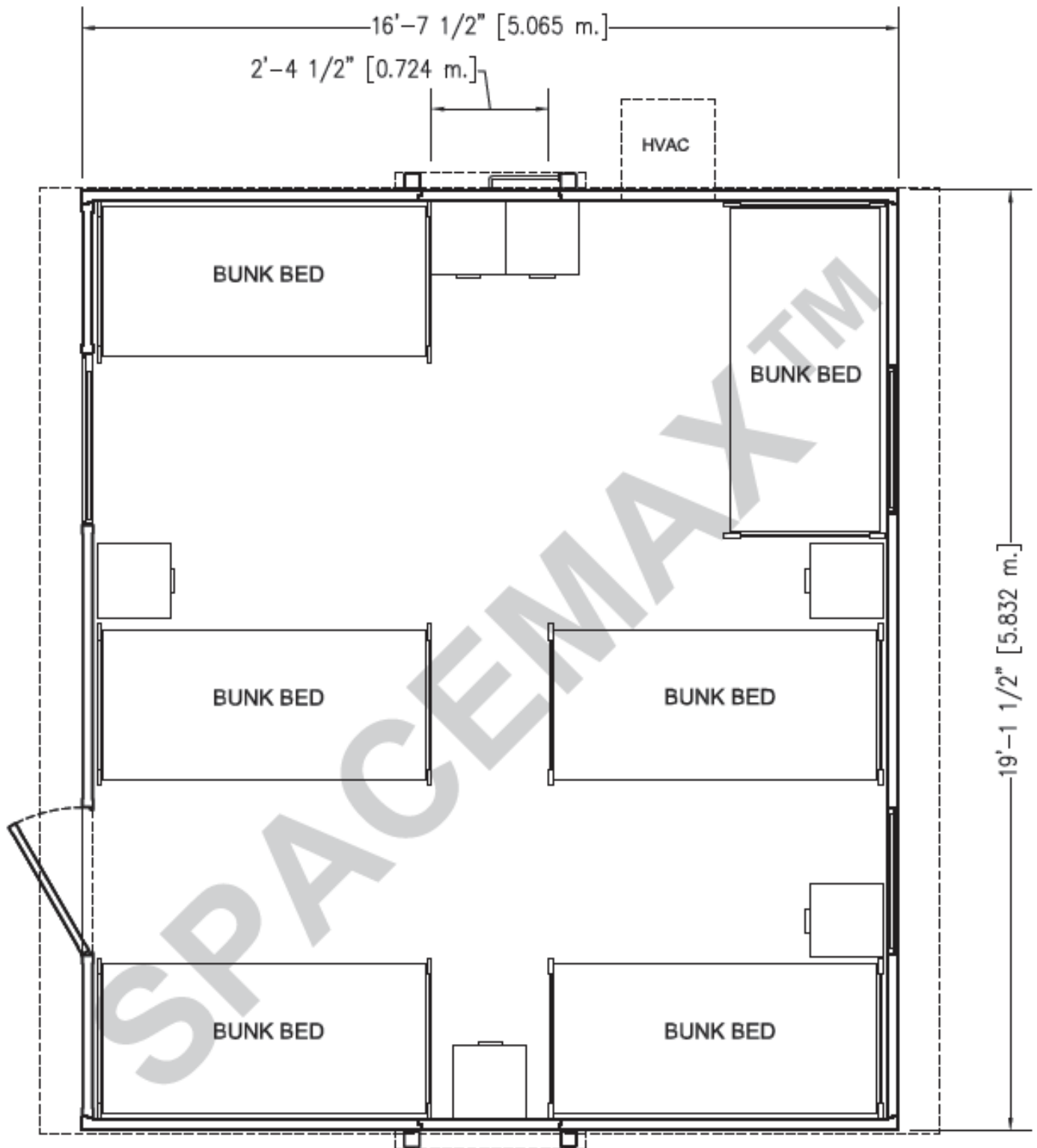
- 10.1 Community bathroom: Latrine unit with toilets, shared sinks with mirrors and urinals. All water pipes and fittings to be PEX type; all drain pipes to be PVC SCH40 type min. Plumbing system to be as per IBC standards.



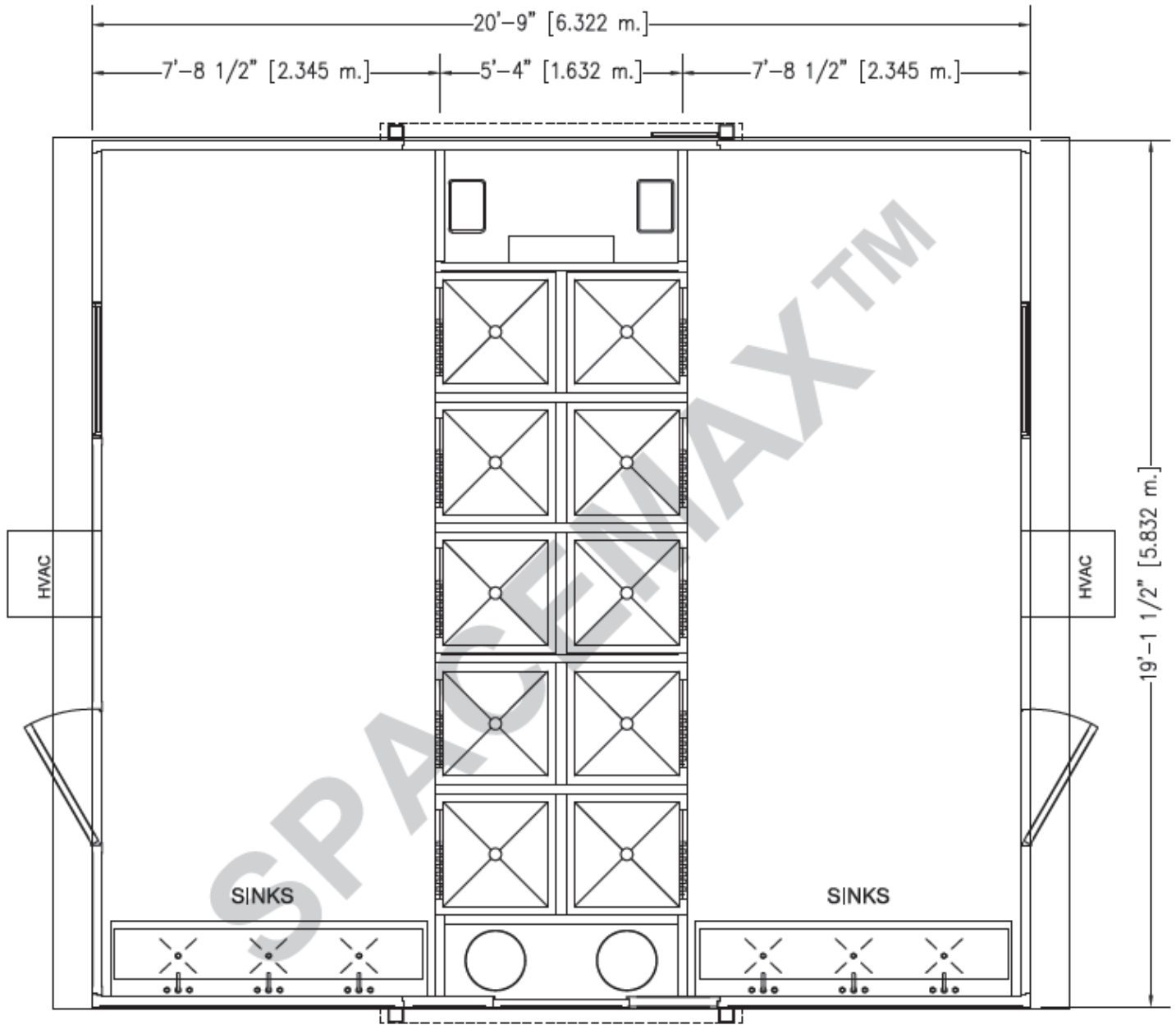
**NOTE:** ACTUAL UNITS MAY NOT LOOK EXACTLY AS SHOWN ABOVE

Specifications may change without notice at the sole discretion of Australian Temporary Structures.

# Dormitory



# Showers



# Latrine

